

## 8 July 2011

by [Bill Harms](#) on Friday, July 8, 2011 at 6:25pm

Spent 3 hours on the refuge today. The star of the day was the rain. The day started out in the upper-80's but with high humidity, not dry like I had anticipated. Was able to check out a few things, but then the heavens opened out. Got about 2 inches of rain in two hours, so had to curtail my exploration. Had a successful day regardless.



Norwegian Cinquefoil (*Potentilla norvegica* L. ssp. *monspeliensis* (L.) Asch. & Graebn.)

Went to Rogue Harbor and found some **Norwegian Cinquefoil** (*Potentilla norvegica* L. ssp. *monspeliensis* (L.) Asch. & Graebn.) blooming on the shore. The biggest difference between this Cinquefoil and others in the genus is the fact it has three leaflets. Compared to the others in the genus it



Norwegian Cinquefoil (*Potentilla norvegica* L. ssp. *monspeliensis* (L.) Asch. & Graebn.)

is a late bloomer. The **Norwegian Cinquefoil** is native to Eurasia and North America. There appears to be two forms of this species. Some botanists have split the North American form as a separate species, but more recently, botanists tend to lump the two together and call them separate sub-species. Both forms have been found in North America, one native, one introduced.



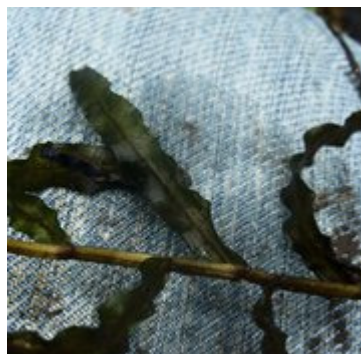
Bog Yellow Cress (*Rorippa palustris* (L.) Besser)

Next to the **Norwegian Cinquefoil**, noticed some **Bog Yellow Cress** (*Rorippa palustris* (L.) Besser) going to seed. There were still flowers on some of the stems, so decided to collect some for the survey. This wet soil loving mustard is native to many parts of North



Bog Yellow Cress (*Rorippa palustris* (L.) Besser)

America, Europe, Asia, and North Africa, and has been introduced elsewhere. It can be annual or perennial, and is highly variable in its growth habit. I have seen some plants with single stems and other plants that sprawl with numerous stems.



In the water, spotted some **Pondweed** (*Potamogeton* sp.) waving away in the current of the stream that flows between Rogue Harbor and Lake Allen. It keyed out to **Spotted Pondweed** (*Potamogeton nulcher*



Spotted Pondweed (Potamogeton pulcher Tuck.)

(Potamogeton pulcher Tuck.), but I am not 100% positive because need more mature

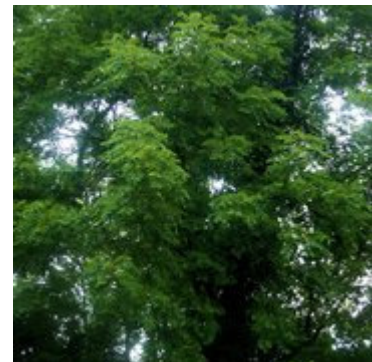
Spotted Pondweed (Potamogeton pulcher Tuck.)

plants to be sure. I will be checking out these plants as the season progresses.



Black Walnut (Juglans nigra L.)

Left Rogue Harbor and stopped off near the Old Forge Bridge, the humidity was getting higher, and the rain appeared imminent. So made a quick foray to the woods margin and found a **Black Walnut** (*Juglans nigra* L.) with immature fruits. Black Walnut is found throughout the



Black Walnut (Juglans nigra L.)

refuge especially on hedgerows and woods margins. The fruits of this specimen appear to be suffering from insect damage. As I made my way back to the Jeep, the heavens opened up and I had a hard time seeing the road at times.