

## 5 July 2011

by Bill Harms on Tuesday, July 5, 2011 at 7:19pm

Spent 2 hours at the refuge.



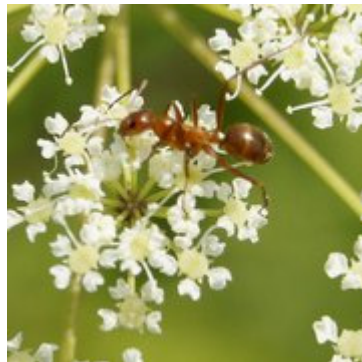
*Canada germander*  
(*Teucrium canadense* L.)

Along South Road east of the BGE powerline right-of-way, spotted a patch of **Canada germander** (*Teucrium canadense* L.). It is native to the lower 48 states, and the southern tier of Canadian provinces except Alberta. It is more common on the East Coast. It is a strong smell reminiscent to creosote, and despite its unpleasant taste. It is also called **American germander**, **Canadian germander**, **Germander**, **Hairy germander**, and **Wood sage**.



**Early Goldenrod**  
(*Solidago juncea* Aiton).

**Goldenrods** (*Solidago* ssp.) are notoriously difficult to separate out. Found this species blooming in the BGE powerline right-of-way near South Road. It appears to be the **Early Goldenrod** (*Solidago juncea* Aiton). This is the earliest blooming species of **Goldenrod** on the North Tract.



**Spotted Water Hemlock**  
(*Cicuta maculata* L.)

Spotted several clumps of **Spotted Water Hemlock** (*Cicuta maculata* L.) in the seepage swamp next to the Powerline Swamp. Yes, like its relative **Hemlock**, (*Conium*), **Spotted Water Hemlock** is deathly poisonous. In humans, if ingested, it can cause convulsions, nausea, and severe cramps within 30 to 60 minutes. It can cause death if enough is ingested. It can still cause permanent nervous system damage assuming a person survives. In cattle, it can cause death in about 15 minutes.



**Cuman Ragweed**  
(*Ambrosia psilostachya* DC.)

In the range just south of the Contact Station, someone dumped piles of dregs on the ground and on the piles a **Ragweed** (*Ambrosia* sp.) was sprouting up. It tentatively keys out to **Cuman Ragweed** (*Ambrosia psilostachya* DC.). Because it was growing on soil that was not very fertile, the plants appeared to be depauperate and malformed, so it is difficult to be sure of this identification. The **Cuman Ragweed** would be a new record for the refuge and the North Tract if the identification holds. There were several plants growing next to the piles on the ground, so it is spreading. But these too appeared to be malformed.



I am not the only one who has business at the Powerline Swamp. Spotted two mosquito control stations set up by the Maryland Department of Agriculture.

A little warm today, temps approaching 90.